

SYNTHETIC ROPE

1. Orient the drum so that the set screw is facing forward. See **Figure 1**.
2. Loosen the set screw using a hex key tool. See **Figure 2**.
3. Route the rope under the drum and through the hole in the drum. See **Figure 3**.
4. Pull the rope through the hole and across the length of the drum. See **Figure 4**.

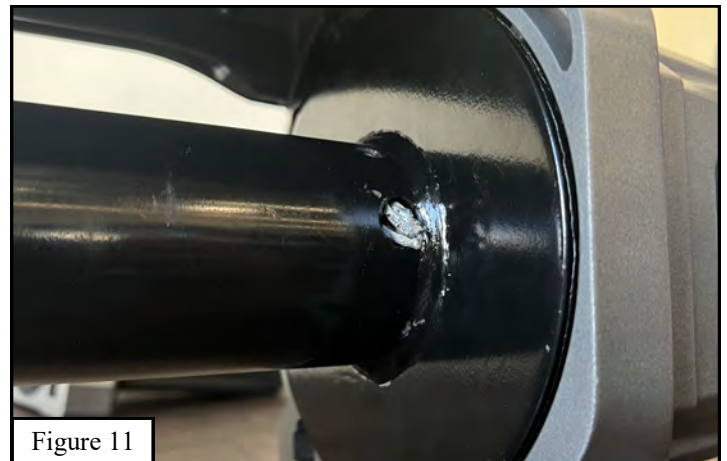


5. Tape the rope to the drum to hold it in place. See **Figure 5**.
6. Wind in the rope onto the drum ensuring the rope is taught as it spools. The rope should wrap over the length of rope taped onto the drum. See **Figure 6**.
7. Continue winding in the rope. See **Figure 7**.

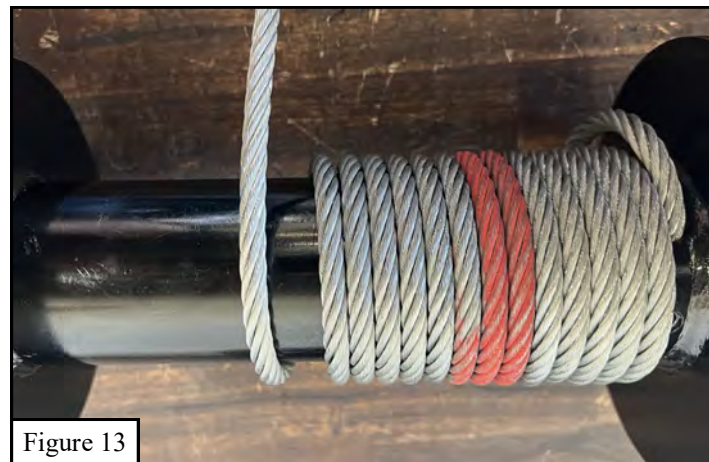


STEEL CABLE ROPE

1. Orient the drum so that the set screw is facing forward. See **Figure 8**.
2. Loosen the set screw using a hex key tool. See **Figure 9**.
3. Route the rope under the drum and through the hole in the drum. See **Figure 10**.
4. A small amount of cable should be exposed through the bottom hole. See **Figure 11**.



5. Tighten the set screw onto the rope using a hex key tool. See **Figure 12**.
6. Wind in the rope onto the drum ensuring the cable is taught as it spools. See **Figure 13**.
7. Continue winding in the rope. See **Figure 14**.





WARNING



Failure to follow these instructions could lead to death, personal injury, and / or property damage.

Failure to follow these instructions could lead to death, personal injury, and / or property damage.

FASTENERS:

All Westin supplied fasteners must be utilized and installed in accordance with the installation instructions and apply torque to the specifications as defined. **DOUBLE CHECK ALL FASTENERS BEFORE INITIAL USE, AND PERIODICALLY IN THE FUTURE TO ENSURE PROPER FUNCTION AND SAFETY.**

DRILLING:

Most Westin products do not require drilling for installation. If drilling is defined as required, use caution when drilling a vehicle. **FAILURE TO REVIEW AN AREA TO BE DRILLED MAY RESULT IN PERSONAL INJURY AND/OR INJURY TO OTHERS AS WELL AS VEHICLE DAMAGE.**

EYE PROTECTION:

ALWAYS WEAR SAFETY GLASSES OR GOGGLES DURING THE INSTALLATION PROCESS TO AVOID PERSONAL INJURY.

MAXIMUM TOWING/CARRYING CAPACITY: (if applicable)

The Westin Receiver Hitches will have a visible tow rating label affixed directly on the product. User should never exceed the vehicle manufacturers maximum tow and weight rating regardless of the capacity of the hitch. **FAILURE TO FOLLOW THESE GUIDELINES WILL VOID THE WESTIN WARRANTY AND MAY RESULT IN PERSONAL INJURY AND/OR INJURY TO OTHERS AS WELL AS VEHICLE DAMAGE.**

FOR CALIFORNIA RESIDENTS ONLY-PROP 65 WARNING:

Some products may contain chemicals such as DEHP, which can cause cancer, birth defects or other reproductive harm. For more info go to www.p65warnings.ca.gov



Westin Automotive Products, Inc.
320 W. Covina Blvd
San Dimas, Ca. 91773

Thank you for choosing Westin products
for additional installation assistance please call
Customer Service (800) 793-7846
www.westinautomotive.com