



# INSTRUCTIONS—INSTRUCCIONES—CONSIGNES

APPLICATION: DODGE CHARGER POLICE PIT BAR (2011 & UP)  
APP PART # 36-2035PB

AUTOMOTIVE PRODUCTS, INC.

ITEM	QUANTITY	DESCRIPTION	TOOLS NEEDED
1,2	2	PIT BAR RAIL ASSEMBLIES (DRV & PASS)	RATCHET
3	2	INNER MOUNTING BRACKETS	17MM SOCKET
4	4	1.50" RUBBER GROMMETS	17MM WRENCH
5	2	LONG SPACERS	ALLEN WRENCH
6	2	MEDIUM SPACERS	18MM WRENCH
7	4	M12 FLANGE NUT (BLACK)	15MM SOCKET
8	4	M12 LONG SOCKET HEAD CAP SCREW (BLACK)	RATCHET EXT.
9	4	M12 CUPPED WASHER (BLACK)	TORQUE WRENCH
10	4	M10 LONG HEX BOLTS (YELLOW)	TRANSFER PUNCH
11	4	M10 CUPPED WASHER (YELLOW)	HOLE SAW
12	4	M10 FLANGE NUT (YELLOW)	DRILL MOTOR
13	4	M10 BUTTON HEAD SCREW (BLACK)	DEBURR TOOL
14	4	M10 CUPPED WASHER (BLACK)	
15	4	M10 FLANGE NUT (BLACK)	
16	2	DRILL TEMPLATE (DRV & PASS)	

## ANTI-SEIZE LUBRICANT MUST BE USED ON ALL STAINLESS STEEL FASTENERS TO PREVENT THREAD DAMAGE AND GALLING

1. Remove contents from box, verify if all parts listed are present and free from damage. Carefully read and understand all instructions before attempting installation.
2. Remove the entire front grille and fascia (referred to as front clip) from the front of the vehicle. Follow the directions on I/S 75-3017 for the 36-2035 Push Bar to accomplish this.
3. If they have not been previously installed; attach the Push Bar mounting brackets contained in the 36-2035 kit (refer to I/S 75-3017).
4. One side at a time, attach the Pit Bar Inner Mounting Brackets (item 3) to the steel bumper channel using the supplied Long M10 Hex Bolts (item 10), Cupped Washers (item 11) & Flange Nuts (item 12), (use the yellow zinc plated hardware). *Note: For the Driver Side installation, some vehicles require the air inlet plenum to be trimmed slightly for the bracket to fit (Figures 1 & 2).*
5. Push the Inner Mounting Brackets (item 3) flush against the steel bumper channel then torque the M10 hardware (item 10,11,12) to 30-35 ft-lbs.
6. There is a plastic crash channel inside the clip that will interfere with the brackets. Trim the crash channel as necessary in order to re-install the front clip (separating it from the clip makes trimming easier). Additionally there is a lower grille in the clip that will interfere with the lower mounting brackets; either remove it or trim it as necessary.
7. Snap the plastic front clip back on the vehicle, but do not attach the retaining screws that are in the fender well area. Note: Refer to I/S 75-3017 for details.
8. Install the 36-2035 Push Bar on the front of the vehicle per I/S 75-3017. Leave the mounting hardware loose as much of it will be re-used to mount the Pit Bar rails.

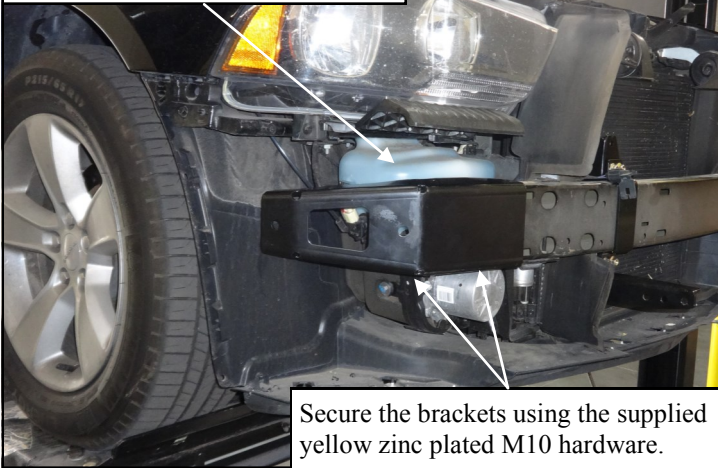


Westin Automotive Products, Inc.  
320 Covina Blvd  
San Dimas, Ca. 91773

Thank You for choosing Westin products  
For Additional installation assistance please call  
Customer service (800) 793-7846  
www.westinautomotive.com

Install the Inner Support Brackets on the steel bumper channel.

Fig. 1



Secure the brackets using the supplied yellow zinc plated M10 hardware.

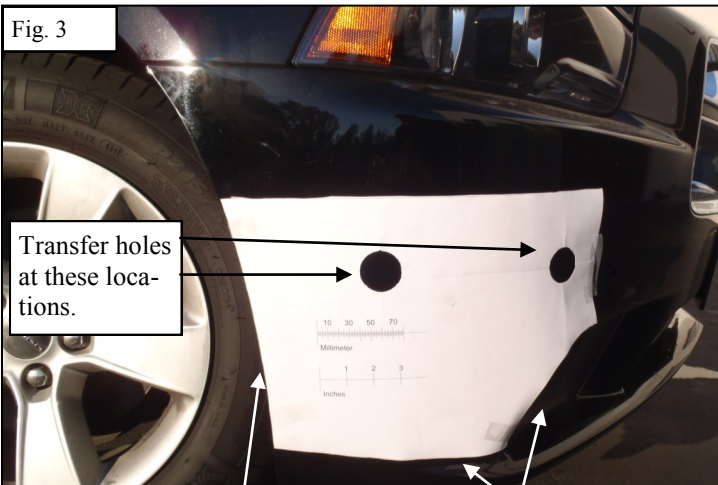
Fig. 2



Trim the air inlet plenum in order to allow the Driver Side Inner Support Bracket to fit. (certain vehicles)

- 9. Obtain the template (item 16) and line up the template as shown on Figure 3 with the wheel well of the vehicle. Use a transfer punch and mark drilling locations on the vehicle's front clip.
- 10. Installer will need to drill holes using a 1/4" drill bit, then verify that the holes line up. *Note: This can be done using a Phillips screw driver or suitable punch as a probe in order to verify that the drilled 1/4" holes are inline with the mounting holes on the Inner Mounting Brackets.*
- 11. Using the 1/4" holes as a pilot; take a 1-1/2" hole saw to drill 1-1/2" holes in the proper locations.

Fig. 3

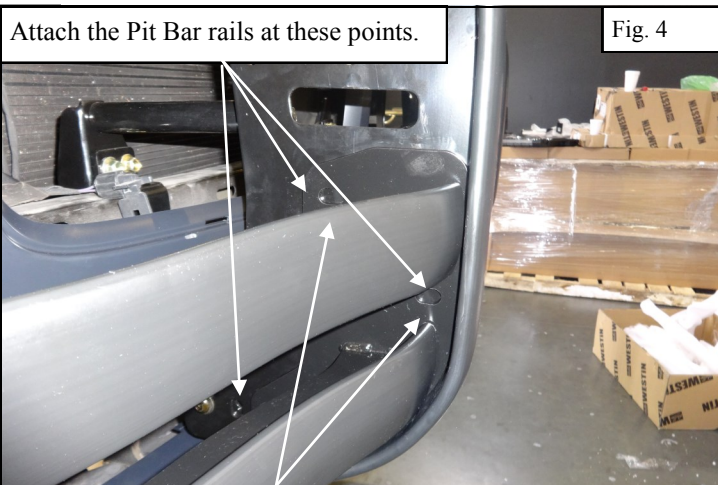


Transfer holes at these locations.

Line the template with the fog light rim, the bottom lip line, and the wheel well.

Attach the Pit Bar rails at these points.

Fig. 4

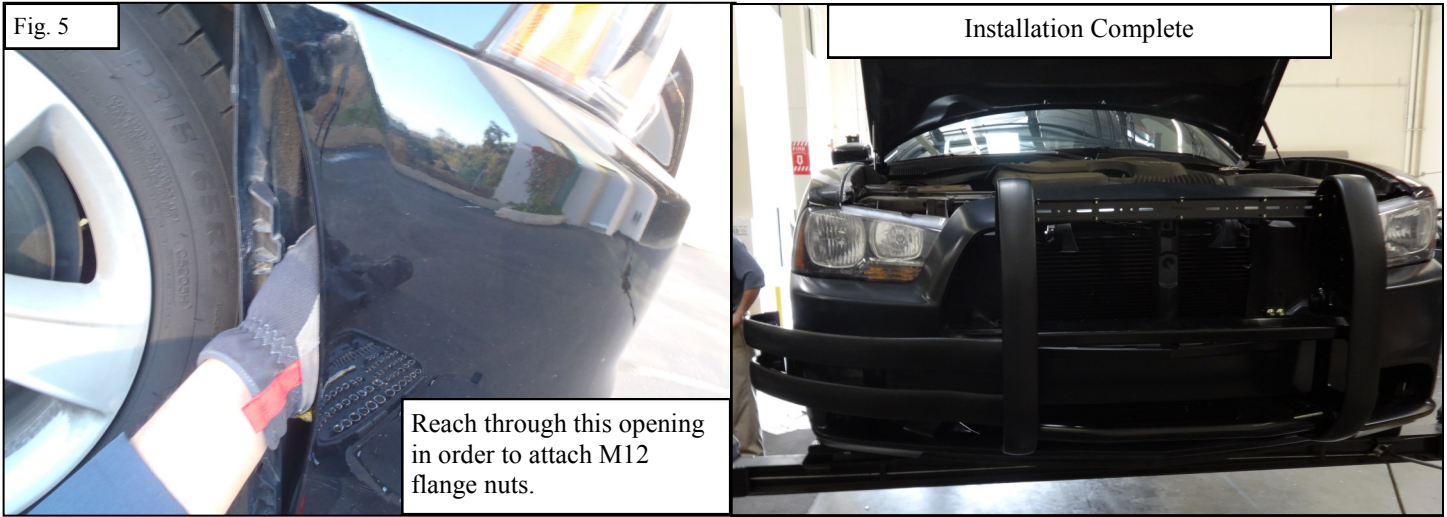


Drilling may be required at these mounting locations on early versions of the pit bar.

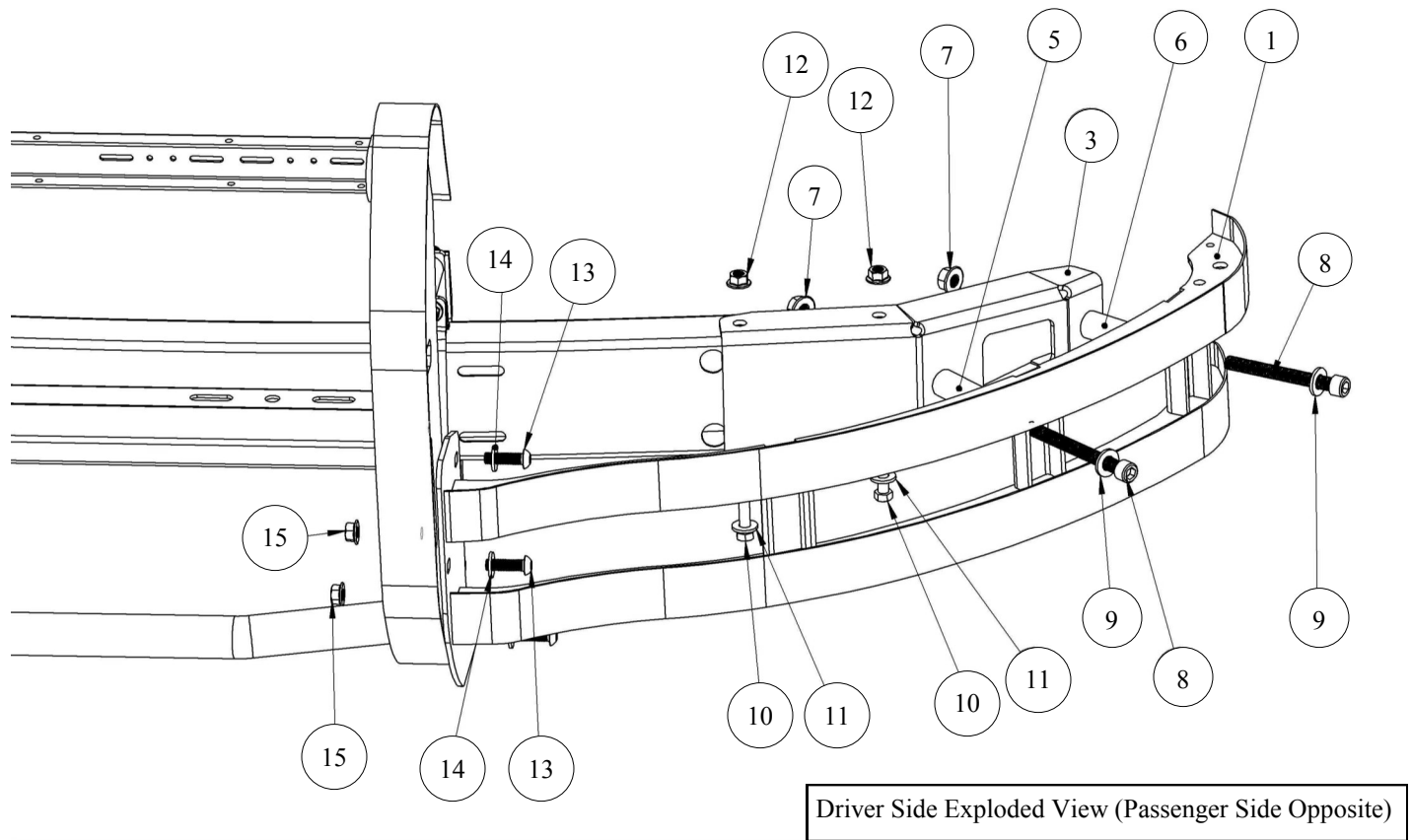
- 12. Deburr the 1.50" holes and install the rubber grommets (item 4).
- 13. Loosely mount the Pit Bar Rail assemblies (Items 1 & 2) to the Push Bar (36-2035). For each side (Passenger & Driver) use (3) M10 button head screws (item 13), along with (3) M10 cupped washers (item 14), and (3) M10 flange nuts (item 15) (Figure 4). *Note: Drilling may be required on early versions of the Push Bar.*
- 14. Place the supplied spacers (items 5-6) inside the drilled 1-1/2" holes. *Note: The longer spacer (item 5) goes toward the center portion on the vehicle.*
- 15. Place an M12 flat washer (item 9) on each M12 socket head cap screw (item 8), then feed the hardware through the Pit Bar Rail assembly (items 1 & 2), Spacers (items 5 & 6), and the Inner Mounting Bracket (item 3).
- 16. Reach through the opening between the front clip and the plastic splash guard beneath the vehicle in order to thread an M12 flange nut (item 7) on each of the M12 socket head cap screws (item 8) (Figure 5).

17. Align and adjust the Pit Bars and Push Bar as necessary then tighten and torque all remaining fasteners: M10 to 30-35 ft-lbs. and M12 to 50—55 ft-lbs.
18. Install all remaining OEM fasteners securing the front clip to the vehicle.

Fig. 5



Reach through this opening in order to attach M12 flange nuts.



Driver Side Exploded View (Passenger Side Opposite)

**CARE INSTRUCTIONS:**

- REGULAR WAXING IS RECOMMENDED. DO NOT USE ANY TYPE OF POLISH OR WAX THAT MAY CONTAIN ABRASIVES.
- STAINLESS STEEL PRODUCTS CAN BE CLEANED WITH MILD SOAP AND WATER. STAINLESS STEEL POLISH SHOULD BE USED TO POLISH SMALL SCRATCHES.
- GLOSS BLACK FINISHES SHOULD BE CLEANED WITH MILD SOAP AND WATER.