

INSTALLATION INSTRUCTIONS

STEP BOARD MOUNT KIT



APPLICATION:

Chevrolet/GMC Express/Savana 2003-2023 155" Wheelbase
(For 54" Passenger Sliding Door)

PART NUMBER:

27-2505

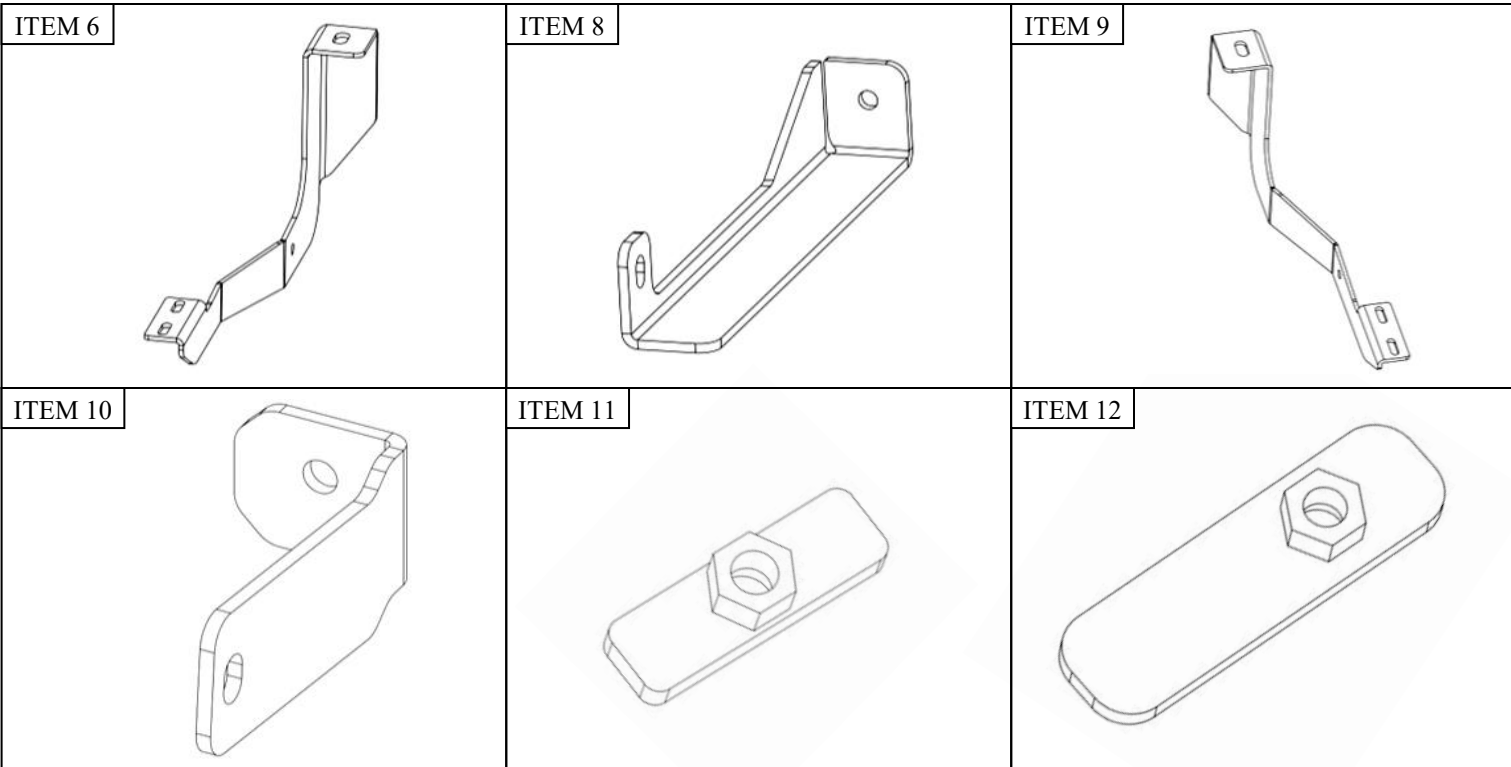
CONTENT			
ITEM	QUANTITY	DESCRIPTION	TOOLS NEEDED
1	1	PASSENGER SIDE BRACKET "B"	13MM SOCKET
2	1	PASSENGER SIDE SUPPORT STRAP "B"	13MM WRENCH
3	1	PASSENGER SIDE BRACKET "C"	17MM SOCKET
4	1	PASSENGER SIDE SUPPORT STRAP "C"	17MM WRENCH
5	1	M8 NUT PLATE	RATCHET
6	1	M10 NUT PLATE	TORQUE WRENCH
7	2	M14 FLAT WASHER	
8	3	M10 HEX HEAD CAP SCREW	
9	5	M10 FLAT WASHER	
10	3	M10 SPLIT LOCK WASHER	
11	2	M10 HEX NUT	
12	1	M8 HEX HEAD CAP SCREW	
13	1	M8 SPLIT LOCK WASHER	
14	1	M8 FLAT WASHER	

ANTI-SEIZE LUBRICANT MUST BE USED ON ALL STAINLESS STEEL FASTENERS TO PREVENT THREAD DAMAGE AND GALLING



Westin Automotive Products, Inc.
320 W. Covina Blvd
San Dimas, Ca. 91773

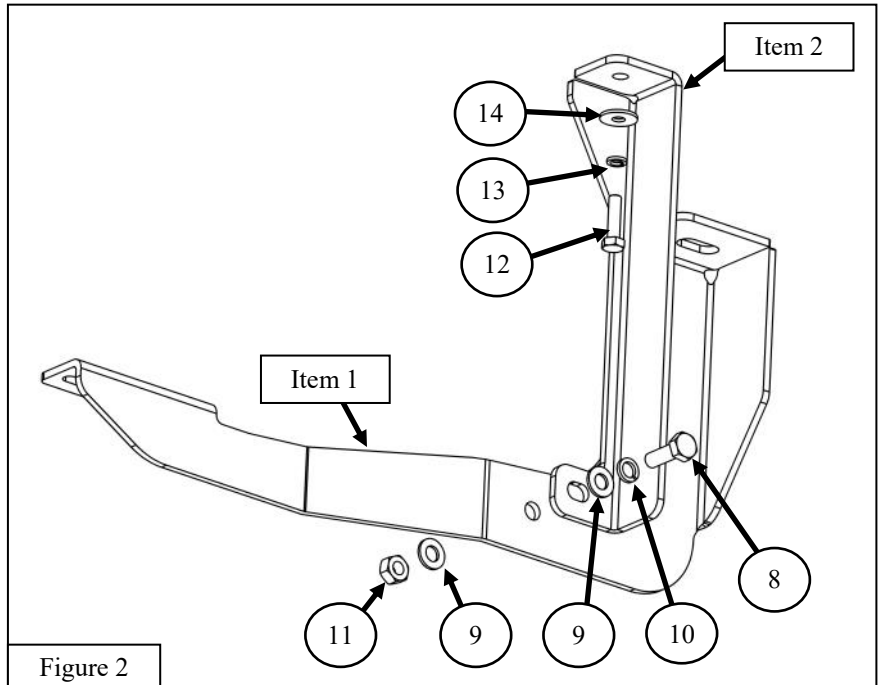
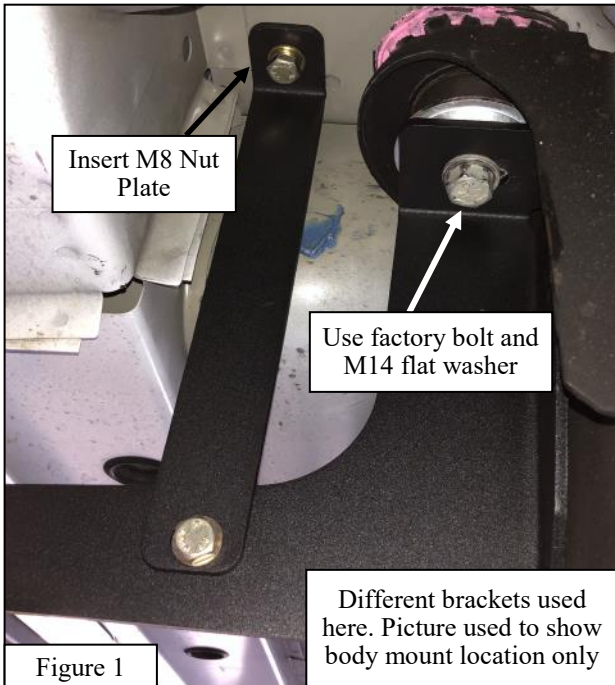
Thank you for choosing Westin products
for additional installation assistance please call
Customer Service (800) 793-7846
www.westinautomotive.com



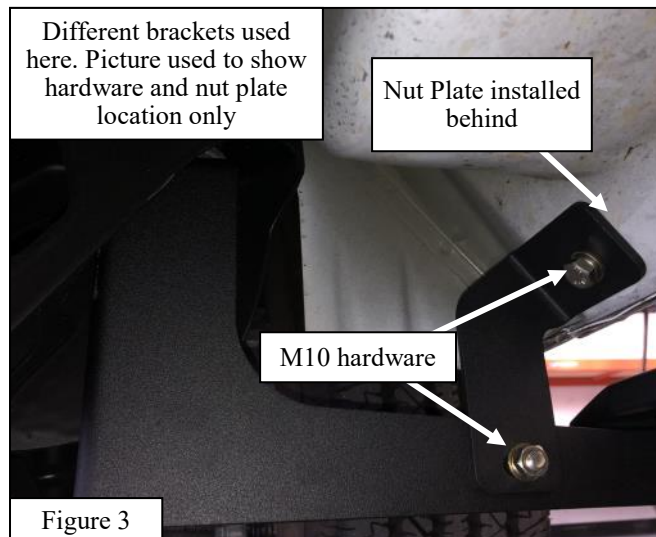
PROCEDURE

1. Remove contents from box, verify if all parts listed are present and free from damage.
Carefully read and understand all instructions before attempting installation.
Failure to identify damage before installation could lead to a rejection of any claim.

2. Remove the factory bolt from the body mount near the front of the passenger side sliding door.
3. Loosely install the Passenger Side Bracket "B" (**item 1**) and loosely install it using the removed factory bolt and provided M14 flat washer (**item 7**). See **Figure 2**. *Note: The M14 flat washer is located between the bracket and the body mount.*
4. Insert a M8 Nut Plate (**item 5**). See **Figure 2**.
5. Loosely install the Passenger Side Support Strap "B" (**item 2**) onto Passenger Side Bracket "B" (**item 6**) using the provided M8 hardware (**items 12-14**) and M10 hardware (**items 8-11**). See **Figure 2**.



6. Remove the factory bolt from body mount near the back of the passenger side sliding door.
7. Loosely install the Passenger Side Bracket "C" (**item 3**) using the previously removed factory bolt and provided M14 flat washer (**item 7**). See **Figure 1**. *Note: The M14 flat washer is located between the bracket and the body mount.*
8. Insert a M10 Nut Plate (**item 6**) through the hole behind the black cap. See **Figure 3**.
9. Loosely install the Passenger Side Support Strap "C" (**item 4**) using the provided M10 hardware (**items 8-10**).
10. Refer to the installation sheet included with the Grate Steps Running Boards for running board installation instructions.
11. Align and adjust the brackets as needed. Tighten and torque all hardware installed to the provided torque specs: M8 hardware to 18 ft-lbs, and M10 hardware to 38 ft-lbs.





WARNING



Failure to follow these instructions could lead to death, personal injury, and / or property damage.

Failure to follow these instructions could lead to death, personal injury, and / or property damage.

FASTENERS:

All Westin supplied fasteners must be utilized and installed in accordance with the installation instructions and apply torque to the specifications as defined. **DOUBLE CHECK ALL FASTENERS BEFORE INITIAL USE, AND PERIODICALLY IN THE FUTURE TO ENSURE PROPER FUNCTION AND SAFETY.**

DRILLING:

Most Westin products do not require drilling for installation. If drilling is defined as required, use caution when drilling a vehicle. **FAILURE TO REVIEW AN AREA TO BE DRILLED MAY RESULT IN PERSONAL INJURY AND/OR INJURY TO OTHERS AS WELL AS VEHICLE DAMAGE.**

EYE PROTECTION:

ALWAYS WEAR SAFETY GLASSES OR GOGGLES DURING THE INSTALLATION PROCESS TO AVOID PERSONAL INJURY.

MAXIMUM TOWING/CARRYING CAPACITY: (if applicable)

The Westin Receiver Hitches will have a visible tow rating label affixed directly on the product. User should never exceed the vehicle manufacturers maximum tow and weight rating regardless of the capacity of the hitch. **FAILURE TO FOLLOW THESE GUIDELINES WILL VOID THE WESTIN WARRANTY AND MAY RESULT IN PERSONAL INJURY AND/OR INJURY TO OTHERS AS WELL AS VEHICLE DAMAGE.**

FOR CALIFORNIA RESIDENTS ONLY-PROP 65 WARNING:

Some products may contain chemicals such as DEHP, which can cause cancer, birth defects or other reproductive harm. For more info go to www.p65warnings.ca.gov

CARE INSTRUCTIONS

- REGULAR WAXING IS RECOMMENDED. DO NOT USE ANY TYPE OF POLISH OR WAX THAT MAY CONTAIN ABRASIVES.
- STAINLESS STEEL PRODUCTS CAN BE CLEANED WITH MILD SOAP AND WATER. STAINLESS STEEL POLISH SHOULD BE USED TO POLISH SMALL SCRATCHES.
- GLOSS BLACK FINISHES SHOULD BE CLEANED WITH MILD SOAP AND WATER.



Westin Automotive Products, Inc.
320 W. Covina Blvd
San Dimas, Ca. 91773

Thank you for choosing Westin products
for additional installation assistance please call
Customer Service (800) 793-7846
www.westinautomotive.com