

INSTALLATION INSTRUCTIONS

STEP BOARD MOUNT KIT

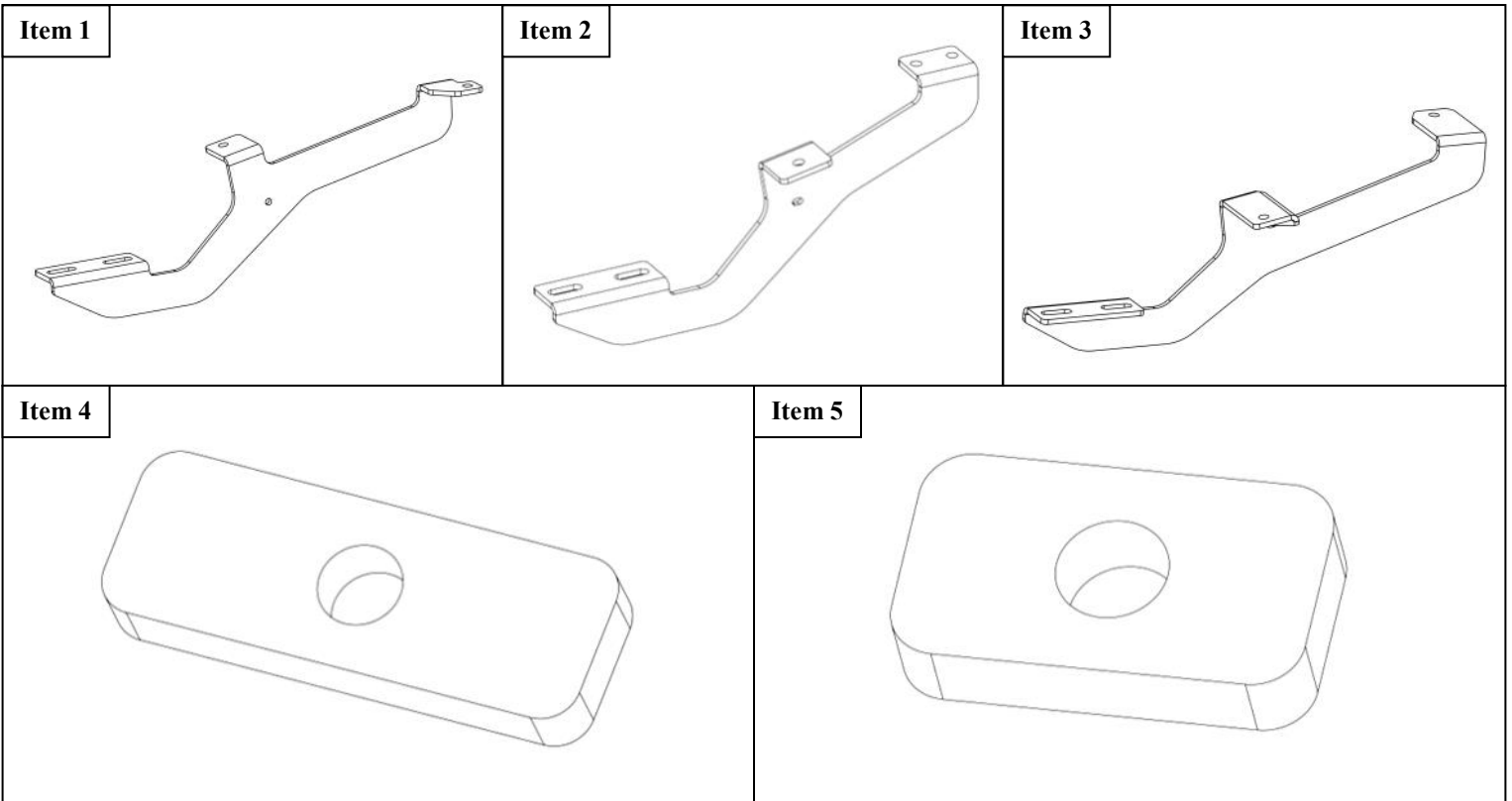


APPLICATION:
Ram ProMaster 2014-2023 2500/3500 159" Wheelbase
(For 54" Passenger Sliding Door)

PART NUMBER:
27-2495

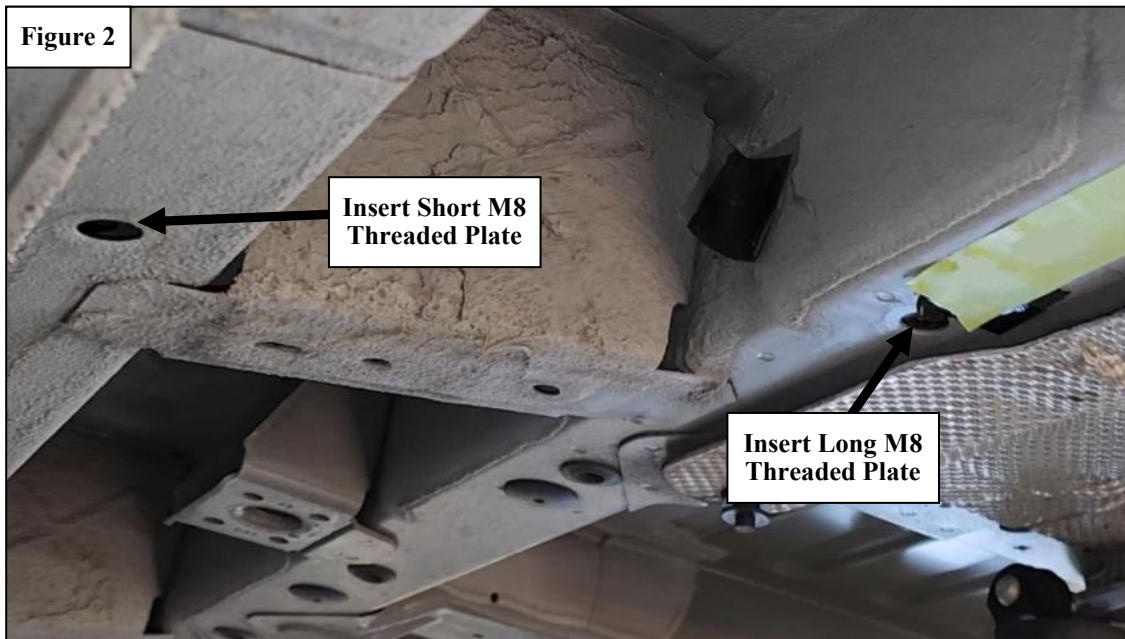
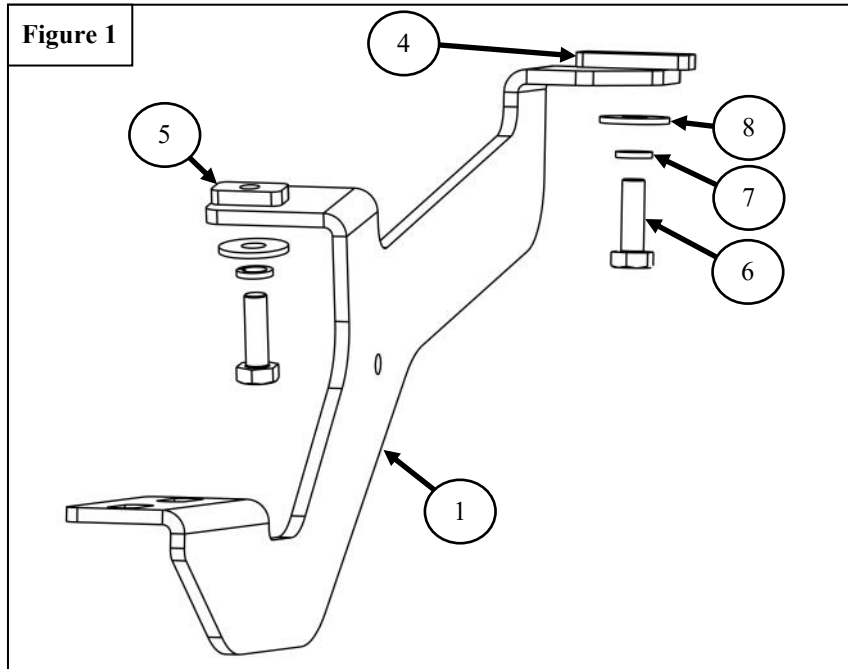
CONTENT			
ITEM	QUANTITY	DESCRIPTION	TOOLS NEEDED
1	1	PASSENGER "A" BRACKET	RATCHET
2	1	PASSENGER "B" BRACKET	TORQUE WRENCH
3	1	PASSENGER "C" BRACKET	13MM WRENCH
4	2	LONG M8 THREADED PLATE	13MM SOCKET
5	3	SHORT M8 THREADED PLATE	
6	7	M8 HEX HEAD CAP SCREW	
7	7	M8 SPLIT LOCK WASHER	
8	7	M8 FLAT WASHER	
9	2	M8 SERRATED FLANGE HEX NUT	

ANTI-SEIZE LUBRICANT MUST BE USED ON ALL STAINLESS STEEL FASTENERS TO PREVENT THREAD DAMAGE AND GALLING



PROCEDURE

1. Remove contents from box, verify if all parts listed are present and free from damage.
Carefully read and understand all instructions before attempting installation.
Failure to identify damage before installation could lead to a rejection of any claim.
2. Insert (1) Long M8 Threaded Plate (item 4) and (1) Short M8 Threaded Plate (item 5) in the two holes used to install Passenger "A" Bracket. See **Figures 1-2**.
3. Using the hardware provided, loosely attach the Passenger "A" Bracket (item 1). See **Figure 1**.



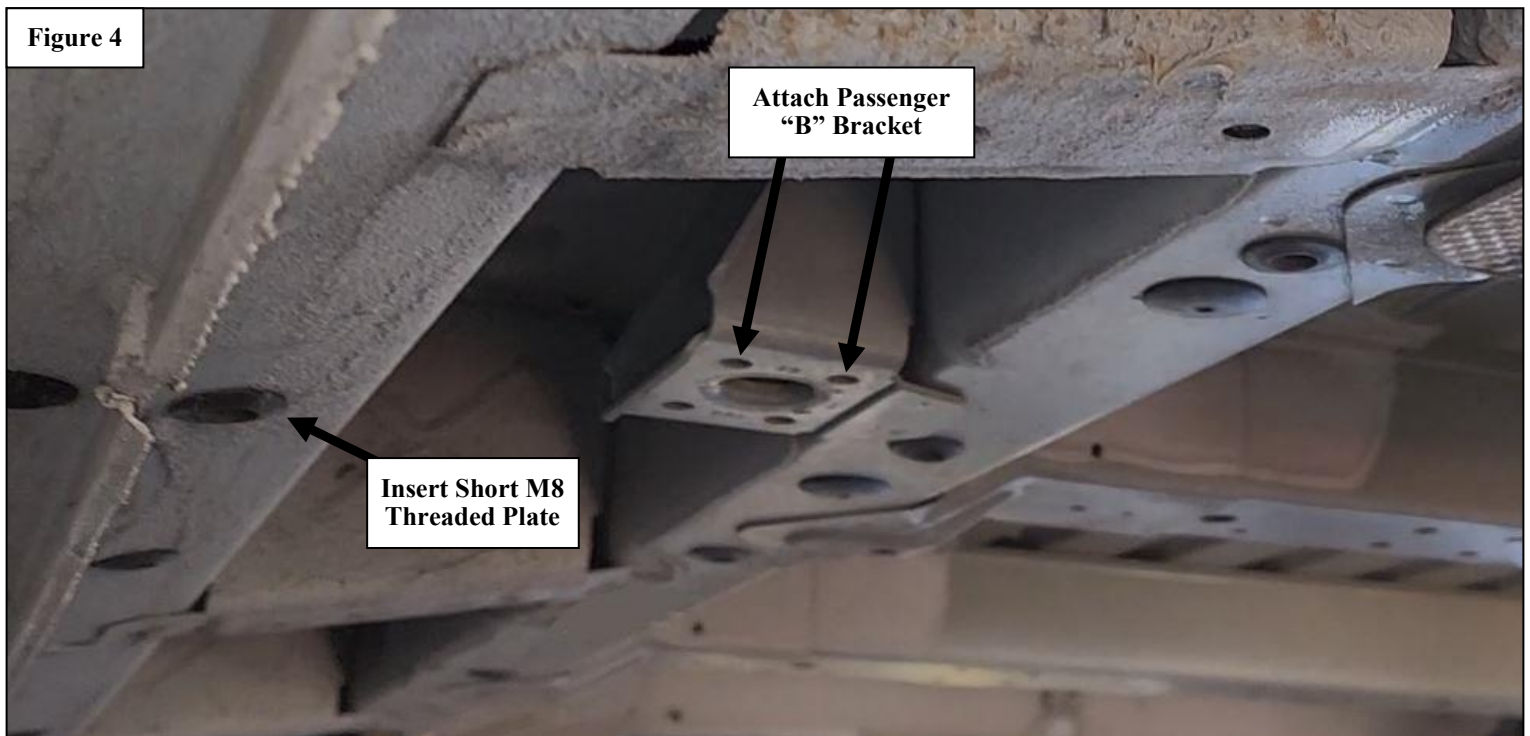
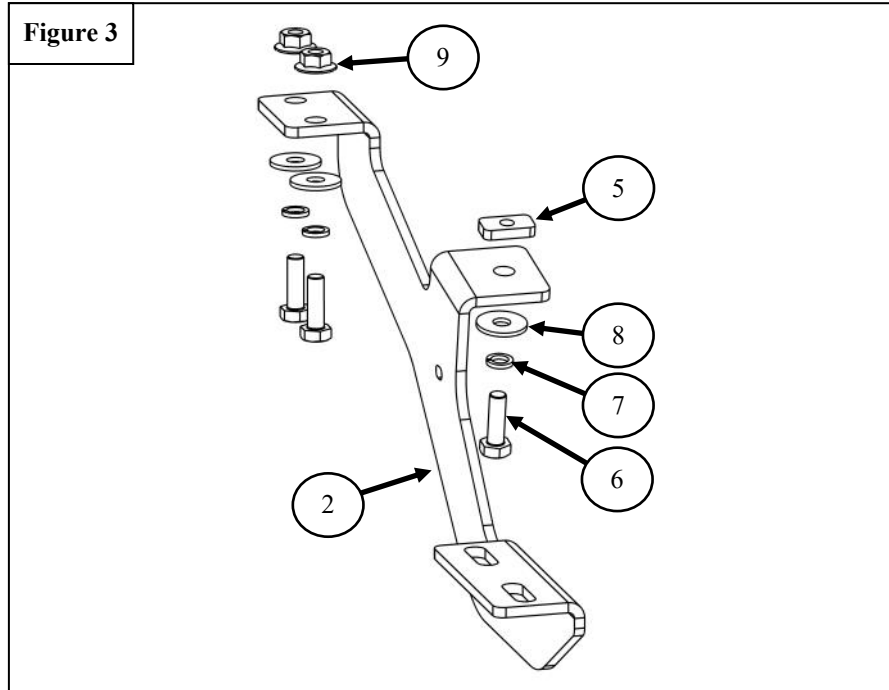
Westin Automotive Products, Inc.
320 W. Covina Blvd
San Dimas, Ca. 91773

Thank you for choosing Westin products
for additional installation assistance please call
Customer Service (800) 793-7846

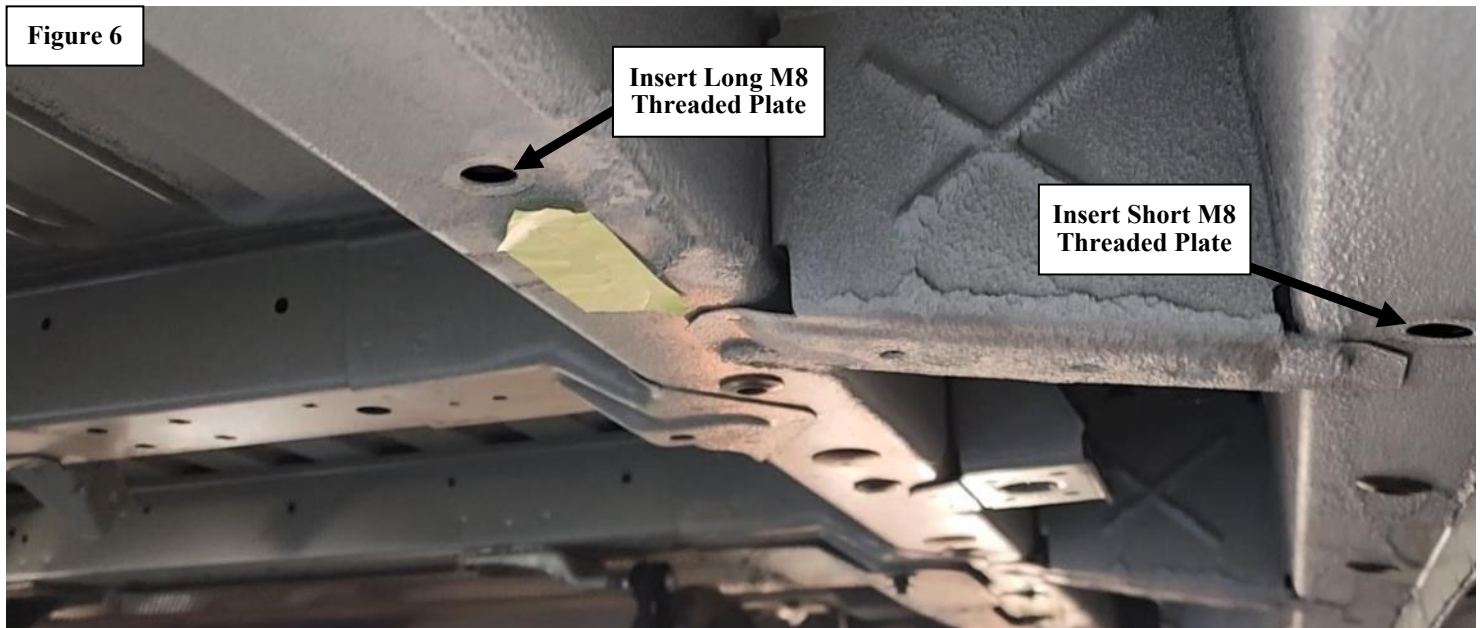
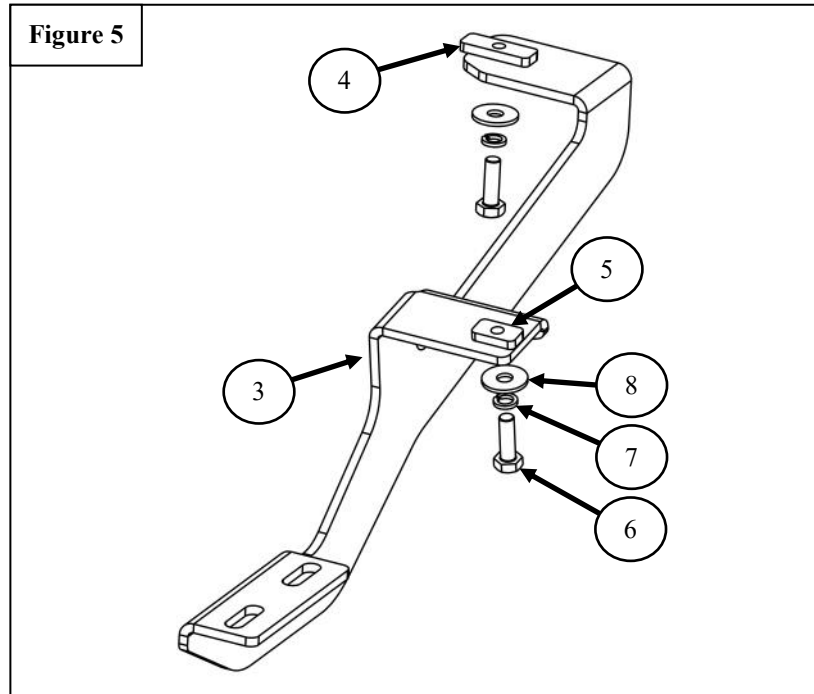
www.westinautomotive.com

DATE: 4/26/2023

4. Insert (1) Short M8 Threaded Plate (**item 5**) in the hole used to install Passenger “B” Bracket. See **Figures 3-4**.
5. Using the provided M8 hardware, loosely attach the Passenger “B” Bracket (**item 2**). See **Figure 3**.



6. Insert (1) Short M8 Threaded Plate (**item 5**) and (1) Long M8 Threaded Plate (**item 4**) in the holes used to install Passenger “C” Bracket. See **Figures 5-6**.
7. Using the provided M8 hardware, loosely attach the Passenger “C” Bracket (**item 3**). See **Figure 5**.



8. Refer to the installation sheet included with the Grate Steps Running Boards for running board installation instructions.
9. Align and adjust the brackets and running board as needed. Tighten and torque all M8 hardware installed to 18 ft-lbs.

CARE INSTRUCTIONS

- REGULAR WAXING IS RECOMMENDED. DO NOT USE ANY TYPE OF POLISH OR WAX THAT MAY CONTAIN ABRASIVES.
- STAINLESS STEEL PRODUCTS CAN BE CLEANED WITH MILD SOAP AND WATER. STAINLESS STEEL POLISH SHOULD BE USED TO POLISH SMALL SCRATCHES.
- GLOSS BLACK FINISHES SHOULD BE CLEANED WITH MILD SOAP AND WATER.



WARNING



Failure to follow these instructions could lead to death, personal injury, and / or property damage.

Failure to follow these instructions could lead to death, personal injury, and / or property damage.

FASTENERS:

All Westin supplied fasteners must be utilized and installed in accordance with the installation instructions and apply torque to the specifications as defined. **DOUBLE CHECK ALL FASTENERS BEFORE INITIAL USE, AND PERIODICALLY IN THE FUTURE TO ENSURE PROPER FUNCTION AND SAFETY.**

DRILLING:

Most Westin products do not require drilling for installation. If drilling is defined as required, use caution when drilling a vehicle. **FAILURE TO REVIEW AN AREA TO BE DRILLED MAY RESULT IN PERSONAL INJURY AND/OR INJURY TO OTHERS AS WELL AS VEHICLE DAMAGE.**

EYE PROTECTION:

ALWAYS WEAR SAFETY GLASSES OR GOGGLES DURING THE INSTALLATION PROCESS TO AVOID PERSONAL INJURY.

MAXIMUM TOWING/CARRYING CAPACITY: (if applicable)

The Westin Receiver Hitches will have a visible tow rating label affixed directly on the product. User should never exceed the vehicle manufacturers maximum tow and weight rating regardless of the capacity of the hitch. **FAILURE TO FOLLOW THESE GUIDELINES WILL VOID THE WESTIN WARRANTY AND MAY RESULT IN PERSONAL INJURY AND/OR INJURY TO OTHERS AS WELL AS VEHICLE DAMAGE.**

FOR CALIFORNIA RESIDENTS ONLY-PROP 65 WARNING:

Some products may contain chemicals such as DEHP, which can cause cancer, birth defects or other reproductive harm. For more info go to www.p65warnings.ca.gov



Westin Automotive Products, Inc.
320 W. Covina Blvd
San Dimas, Ca. 91773